

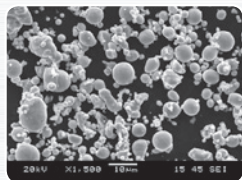
## 粉末参数 / Typical properties

产品 Products	Cr	Ni	Mo	Si	Mn	Nb	Cu	Co	氧含量 O.C. PPM	振实密度 T.D. g/cm <sup>3</sup>	激光粒度 Laser Particle Size(um)		
											D10	D50	D90
316L(气)	16~18	11~14	2~3	<1.0	<1.5				500	4.95	5.1	13.7	28.2
316L									2900	4.75	3.06	9.61	23.33
17-4PH	15.5~17.5	3~5	<0.5	<1.0	<1.0	0.15~0.45	3~5		3100	4.70	3.47	9.87	24.37
440C	16~18	<0.2	0.4~0.8	<1.0	<1.0				1500	4.40	3.60	10.92	26.90
420L	12~14			<1.0	<1.0				2000	4.40	3.11	9.83	22.62
304L	18~20	8~12	<0.2	<1.0	<1.5				3500	4.80	3.06	9.97	25.82
4605		1.5~2.5	0.2~0.5	<1.0					3500	4.40	3.75	10.80	25.78
8620	0.5~1.0	0.5~1.0	<0.5						3000	4.63	3.25	9.46	23.07
HK30	24~27	19~22	<0.5	0.75~1.4	<1.5	1.2~1.5	<0.3		3400	4.20	3.24	8.74	20.88
4J29	<0.2	28~30	<0.2	≤0.3	≤0.5		<0.15	16~18	≤0.35	5.10	3.16	9.87	23.42
1J85		79~81	4.8~5.0	0.15~0.3	0.3~0.6		<0.2		≤0.35	5.10	4.01	10.24	23.69
F75	28~32		6~8	≤0.5	≤0.5			60~62	≤0.35	5.10	2.98	8.89	21.68

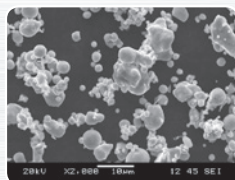
## 粉末烧结特性 / Features of Sintered Powder

产品 Products	碳含量 C	烧结温度℃ S.T.	烧结密度g/cm <sup>3</sup> S.D.	收缩比% Shrinkage	抗拉强度MPa T.S.	屈服强度Mpa Y.S.	硬度(HRB) Hardness	伸长率% elongation
316L (气)	<0.03	1360~1380	≥7.9	1.173	547	193	≥69	56.5
316L	<0.03	1360~1380	≥7.85	1.167	530	186	≥65	54.5
17-4PH	<0.07	1280~1320	≥7.6	1.165	975	730	≥28(HRC)	5
440C	1.2~1.4	1230~1240	≥7.5	1.165	1137	538	≥55(HRC)	1.7
420L	0.15~0.45	1320~1360	≥7.6	1.165	800	650	≥600(HV)	5
304L	<0.03	1360~1380	≥7.75	1.165	530	186	≥65	35
4605	0.4~0.6	1250~1280	≥7.5	1.185	700	500	≥70	11
8620	<0.2	1250~1280	≥7.5	1.165	445	210	≥45	30
HK30	0.35~0.65	1310~1330	≥7.6	1.165	782	436	≥80	18
4J29	<0.03	1330~1380	≥8.0	1.162	480	280	≥180(HV)	38
F75	<0.35	1330~1380	≥8.0	1.165	1200	850	≥280(HV)	12

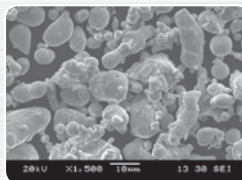
## 粉末微观形貌 / Particle Shape



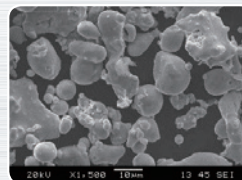
316L



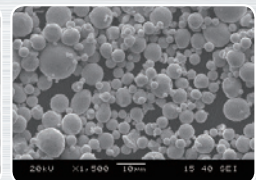
17-4PH



440C



HK30



316L (气)

## MIM应用 / Applications of MIM

- Car 汽车零件
- Tool 工具零件
- Phone 手机零件
- Medical 医疗零件

