

粉末参数 / Typical properties

产品 Products	相近钢号 Similar Steel Grades				主要成分 Chemical Composition					
	Bohler	Erasteel	Crucible	NACHI	C	W	Mo	Cr	V	Co
AHP M3	S790	ASP2030	REX M3-1	FAX31	1.3	6.2	5	4	3	
AHP M4	S690	EM4	CPM M4		1.35	5.5	4.7	4.2	4	
AHP T15		ASP2015	CPM T15	FAX55	1.55	12	-	4	5	5
AHP T15M	S390	ASP2052			1.6	10	2.2	4.7	4.8	8
AHP 2030	S590	ASP2030	CPM REX45	FAX38	1.3	6.5	4.9	4	2.9	8.3
AHP 2060		ASP2060			2.3	6.5	7.0	4.2	6.5	10.5
AHP 10V			CPM 10V		2.45		1.3	5.25	10	

产品应用 / Applications

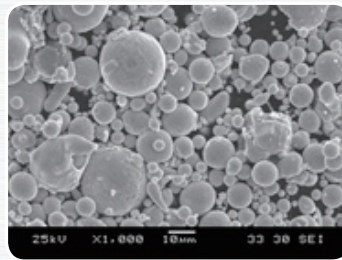
安泰科技开发了AHP系列高速工模具钢粉末，开创了国产高速工模具钢粉末的先河。工模具钢粉末主要是粉末冶金高速钢及模具钢的原料。由于采用真空雾化制粉工艺，粉末具有球形度好，氧含量低等特点，粉末经热等静压成形，并经过精确变形加工后，产品具有热处理尺寸稳定，优异的可磨削性、

加工性、耐磨性及力学性能。主要用作制备拉刀、滚刀及各类高性能复杂刀具，冷作模具、注塑螺杆及耐磨件等。

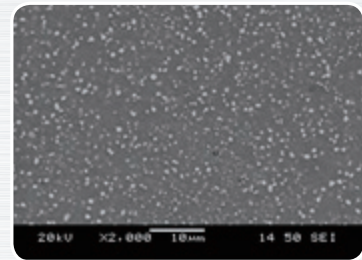
AT&M has developed "AHP" series powder for high-speed tool & die steel, which did make a historic milestone for the nationalization of manufacturing high-speed tool & die steel in China. Tool & Die steel powders are mainly used for raw materials of powder metallurgy high-speed steel and die steel.

With the processes of vacuum gas atomized technology, the powder has high sphericity and low Oxygen. The steel products made from "AHP" powder by HIP and Precise deformation processing posses the excellent performances in heat-treatment stability, cutting, grinding, processing, wearing and Mechanics.

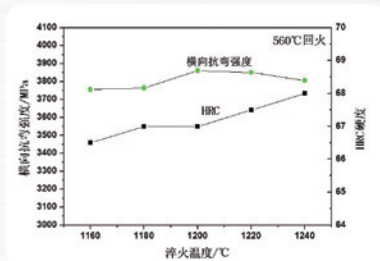
Main applications: broach, cutting hob, high-performance complex cutting tools, cold-work die, injection screws and wearing-resistance parts etc..



粉末形貌
Particle Shape



AHP粉末高速钢微观组织
AHP powder high speed steel microstructure



AHP粉末高速钢性能图

The performance graphs of AHP powder high speed steel



滚刀

Cutting hob

发动机气门导管及座圈用粉

Powders for engine valve seat & guide

产品 Products	主要成分 Chemical Composition								
	Cr	Mo	Ni	Co	Si	V	W	C	Fe
M7	25	25	10	Bal.	1	-	-	-	-
M3-2	4	6	-	0.5	0.3	3	6	0.9	Bal.
T400	8.5	28.5	-	Bal.	2.5	-	-	-	-

项目 Item	-150目(mesh)粒度分布 Particle Size Distribution					氧含量 O.C (PPM)	松装密度 A.D (g/cm ³)	硬度 Hardness (HRB)	压溃强度 Crushing Strength (Mpa)
	+150	-150+250	-250+325	-325+400	-400				
检测 Testing	<1	<10	<25	<10	>55	<2500	2.0~3.0	85~102	>500

除上述表格所列产品牌号成分和粒度规格外，我公司还可根据客户需求接受定制
Chemical composition and particle size specifications can be customized

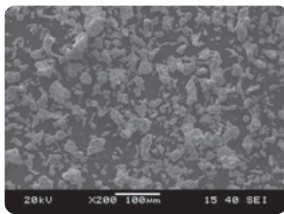
低松比不锈钢粉

Low apparent density stainless steel powder

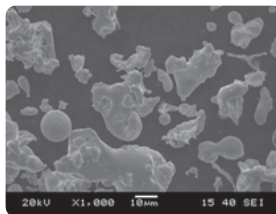
产品系列 Products	常用牌号 Grade	典型用途 Application
低松比不锈钢粉末 Stainless Steel Powder	316L, 304L, 303L, 310S, 321等	粉末冶金模压零件，汽车及多孔过滤材料等 Powder metallurgy products Auto and filter field

产品 Products	松比 A.D (g/cm ³)	流动性 Mobility (s/50g)	氧含量 O.C (PPM)	粉末粒度(mesh)	生坯密度 green density (g/cm ³)
304L	2.7-2.9	<40	<2500	-80目, -100目	>6.4
316L	2.7-2.9	<40	<2500	-80目, -100目	>6.5

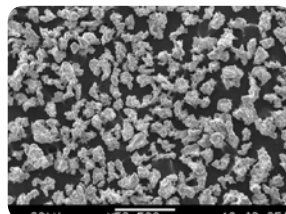
粉末微观形貌 / Particle Shape



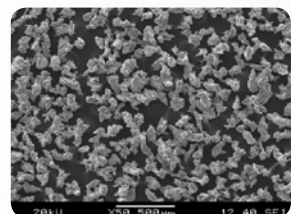
FeCrNiMo



CoCrMoNi



304L



316L

产品应用 / Applications



发动机气门座圈
Engine Valve Seat



发动机气门导管
Engine Valve Guide



不锈钢齿轮零件
Stainless steel gear parts



多孔过滤材料
Porous filter element